

THE ART OF CRAFTSMANSHIP

MATERIALS, FINISHES & FABRICS

All the pieces in Mapswonders's collection are customizable, which means every material and finish can be changed according to your preferences. You can choose from a wide range of wood veneers, lacquers, leaves, glasses, marbles and metal swatches. Moreover, we also work with COM and COL regarding the upholstery pieces, therefore you can send us your own fabric.

METAL



POLISHED BRASS



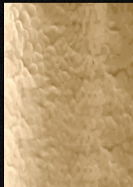
BRUSHED BRASS



ANTIQUE BRASS



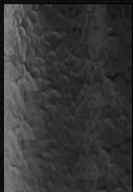
CAST BRASS*



HAMMERED
BRASS



SHOTGUN BRASS



HAMMERED
SHOTGUN BRASS



BRUSHED STEEL



POLISHED STEEL



BRUSHED COPPER



HAMMERED
COOPER



POLISHED COPPER

VENEER



OAK GREY



OAK SOFT GREY



OAK OYSTER



OAK BROWN



OAK SOFT BROWN



OAK BLACK

MARBLES



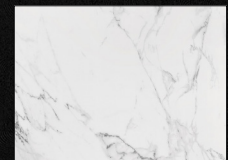
NERO VENATO MARBLE



WHITE PANDA MARBLE



BLACK GOLD MARBLE



CARRARA MARBLE

* AVAILABLE FOR CAST BRASS PIECES ONLY



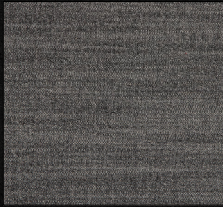
MAPS
WONDER

STABI
TOOL

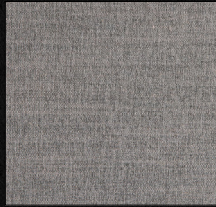
THE ART OF CRAFTSMANSHIP

MATERIALS, FINISHES & FABRICS

All the pieces in Mapswonders's collection are customizable, which means every material and finish can be changed according to your preferences. You can choose from a wide range of wood veneers, lacquers, leaves, glasses, marbles and metal swatches. Moreover, we also work with COM and COL regarding the upholstery pieces, therefore you can send us your own fabric.



PRAIA BF213-7



PRAIA BF213-6



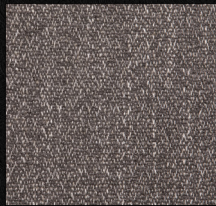
PRAIA BF213-3



PRAIA BF213-4



MURSI BF233-06



FREDOOM BF232-3



FREDOOM BF232-2



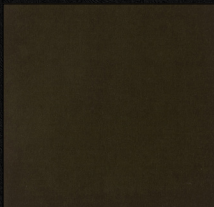
FREDOOM BF232-1



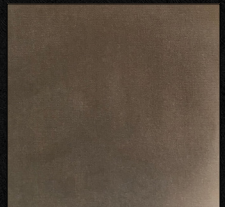
EDEN BF230-8



EDEN BF230-6



EDEN BF230-5



EDEN BF230-2



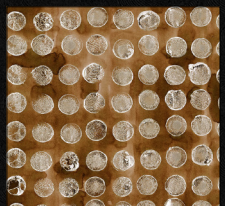
MALLORCA BF221-5



MALLORCA BF221-4



MALLORCA BF221-3



BOMBOM AMARELO



MAPS
WONDERS







TERMS & CONDITIONS

TERMS & CONDITIONS

The company Mapswonders (Part of Antonia & Vasco, Lda, hereafter designated as "the vendor") sells products covered by the "Mapswonders" trademark worldwide. These General Terms and Conditions of Sale are applicable to all distance sales of Mapswonders products starting in Mapswonders.com website, including with telephone, email or any other relevant communication assistance provided by Mapswonders sales assistants (customer service); The use of the distance sales service described herein is reserved solely for customers. The term "Costumer" is to be understood as any registered company who enters into a legal transaction for purposes that predominantly are inside his trade, business and profession. The resale, rental or transfer for commercial or professional reasons of products purchased on the Site are allowed; Mapswonders reserves the right of deciding the nature of a legal transaction between Mapswonders and what is considered an "end costumer" (an individual consumer); It is understood that by placing an order on the Mapswonders.com website, including with telephone, email or any other relevant communication assistance provided by Mapswonders the Customer fully and unreservedly acknowledges and accepts these General Terms and Conditions of Sale, which form an integral and substantial part of these recitals.

PRICE

Prices always refer to a single unit and VAT is not included. Legal tax and fees must be subsequently added to the price. We reserve the right, without prior notice, to discontinue products or change specifications and prices. Packaging is always included in our price; however if the customer requires specific packaging, they will be charged.

ADJUDICATION & PAYMENT TERMS

The proforma invoice should be signed and stamped by the customer as a form of approval of the described content. A 50% deposit minimum is required to start the production of customer's order and the balance payment 3 days prior to shipping. Mapswonders starts the production after confirming the 50% adjudication value. The lead time starts counting after this day. All pieces are the property of Mapswonders until payment in full is received. Mapswonders reserves the right to defer the dispatch date until the balance of the order is received. The payment must be by account transfer (in Euro €) and a confirmation (receipt) of the transfer must be send by email. Custom items are not returnable under any circumstances. For custom items, after adjudication, refunds will be refused under any circumstances. Custom items are not returnable under any circumstances. For custom orders – Refunds will be refused after 50% adjudication under any circumstances.

PAYMENT OPTIONS

You can pay by making a bank transfer. This is the most common procedure. In exceptional cases, it might be possible to use a letter of credit, however it may take longer and involves additional costs. The payment must be made in euro only.

PAYMENTS DETAILS

Company bank's - ING

Account name - Mapswonders B.V

Bank Address - ING Bank N.V., Foreign Operations, PO Box 1800
1000 BV Amsterdam

IBAN - NL86 INGB 0008 6726 97

SWIFT - INGB2A

LEAD TIMES

Delivery time for In Stock products – 10 business days. Lead time for Pre – Order products – 6 - 8 weeks (delivery time is not included). For pieces with custom specifications or orders of large quantities Mapswonders reserves the right to agree with the client.

PRODUCT STANDARD

Mapswonders pieces are handcrafted and every effort is made to maintain uniformity but slight variations may occur. Timber and metal finishes are applied by hand and may vary in colour or tone. While Mapswonders will make every effort to match a finish, no guarantee can be made of an exact match. We do not guarantee finishes against fading and oxidation. Variations in colour and veining are inherent in stone and wood and considered to be part of the natural beauty. Manufacturer does not guarantee fabrics, dyed or natural, from fading.

INTERNET POLICY

Dealer internet websites may neither advertise, nor in any way display the Mapswonders name, logo, product images or any other branded company symbols or information without prior written consent from the company. Dealer websites may not display pricing on Mapswonders pieces, promotional offers, discounts or value statements (e.g. lowest price). Please contact Mapswonders for further company guidelines on internet usage.

DISTRIBUTION POLICY

Mapswonders reserves the right not to sell to, or continue to sell to, any dealer whose distribution or sales tactics result in a negative effect on company ability to compete and sell within a market area.



PRODUCT

Each Mapswonders design is hand crafted. While every effort is made to maintain uniformity, slight variations may occur. Mapswonders is free of committing any design improvement without notification. Images on catalogue or website may vary from the final product. The brand works every day to enhance the quality of its products aesthetically, usability and reliability. Mapswonders reserves the right, without prior notice, to discontinue products or change specifications on products.

Upholstery

All upholstery products can have up to 5 cm / 1,97 inches variation due to the manual nature of Mapswonders production processes. Mapswonders will not accept custom dimensions requests with less than 10cm difference from the standard product or claims regarding dimensions variations under 5 cm / 1,97 inches. All fabrics from Mapswonders Collection may vary in color and may be discontinued without prior notice.

Furniture . Lighting

Many wood and metal finishes are applied by hand and may vary in color, tone and character. While Manufacturer will make every effort to match a finish and/or texture, no guarantee can be made of an exact match. Manufacturer does not guarantee finishes against fading and oxidizing. All furniture featuring brass elements will need to be properly cared for and polished over time. Due to the porous nature of brass, it is common to have slight, unavoidable discrepancies in the metal upon production completion. Variations in color and veining are inherent in stone and wood and consider red to be part of the natural beauty. Furniture and lighting is handmade, and therefore is subject to slight variations. Due to this, products may vary from images seen online.

CUSTOM ORDER

For every custom orders, customer should always ask for advice from product specialist and brand ambassador to confirm viability of materials finishes, dimensions and prices. Mapswonders is not responsible for customer's choices that at the end doesn't work well.

CUSTOMER'S OWN MATERIAL OR LEATHER (COM | COL)

Fabric quantity requirements are based on a standard width of 1,40cm / 55" for plain fabrics. If the customer fabric has a different width or contains a pattern, Mapswonders must be notified in order to inform the customer on the exact required fabric quantity. If the pattern requires matching, Mapswonders needs to know the repeat dimensions for a calculation of additional yardage/meters required and/or additional charge for matching. The customer is responsible to advise Mapswonders in writing of any specific requirements to special alignment, placement of or detail, front or back of the COM/COL, otherwise COM/COL will be applied according to the upholsterer guidelines based on standard model. The customer is responsible for the fabric transport costs and all export fees to the Mapswonders warehouse. Mapswonders will refuse all fabrics with charges for the receiver of the fabric. Mapswonders is not responsible for orders with customer's fabric, when the fabric features put into question the production quality of the product. Mapswonders will not be responsible when the customer do not choose the appropriate fabric for the future use of the product. A completed copy of the COM/COL Form must be submitted together with the fabric/leather to the Mapswonders warehouse, to avoid delays caused by lack of identification.

MANUFACTURER'S DRAWINGS & DESCRIPTIVE MATTERS

All Manufacturer's drawings, descriptive matter, weights, dimensions, descriptions and illustrations contained in the catalogues, website or prices lists are close approximations only and intended to give a general description of the goods and shall not form part of this agreement.

SAMPLES

Mapswonders has samples available of all its standard finishes, for hard case and fabrics. To purchase any of these samples, the customer must contact Mapswonders at info@mapswonders.com.

WARRANTY

There are no warranties with our products. When issues arise, Mapswonders reserves the right to decide on a case-by-case basis.



FREIGHT POLICY & DAMAGE CLAIMS

Transportation fees will be charged separately from the product(s) value. Standard shipping quotation includes door-to-door, drop off service only. If a different service or urgent deliver is required, the customer must clearly request it when placing the order and will be charged accordingly. All products are carefully packed and inspected prior to shipment. According to the existing conventions (CMR (1956), Warsaw (1929) / Montreal (1999), Brussels (1924), CIM (1970), the receiver on receipt of the goods shall verify their conditions with the carrier and keep the package.

The proof of delivery (POD) must be signed with reservations:

- (1) In case of no apparent damage, customer must mention on POD - "received the goods but will be checked the state". In this case, customer have a maximum of 7 days, after delivery, excluding Sundays and holidays, to claim
- (2) In case of apparent damage, the customer must open the goods in front of the carrier and mention the damages on POD.

The customer should keep the products in the final destination and save the packages. Since the Terms and Conditions of the order are Ex Works (EXW), MAPSWONDERS is not responsible for loss or damage in transit. Should visible or concealed damage occur in transit, immediately notify the delivering carrier with initial notification of intent to file a claim. Any damage should be communicated to MAPSWONDERS during the first 48 hours after receiving the order; photographic and video evidence of the damages should be sent via email to info@MAPSWONDERS.com. Failure to report concealed damage within 48 hours of reception may result in the denial of the claim. MAPSWONDERS is not responsible for damage caused by handling, loading or unloading by people acting on behalf of the customer. If the customer chooses to transport the product(s) by his own methods or means, MAPSWONDERS will be free of any charges or responsibility over events that might occur during transportation, and the customer is responsible for handling all the logistics in the carrier or collector and for the replacement of the damaged part(s) or complete pieces(s).

REIGHT POLICY & DAMAGE CLAIMS

No returns will be accepted without written consent from MAPSWONDERS. Unauthorized returns will be refused at the customer's expense. Returned items must be in their original condition and packaging, and you shall repay and be liable for all charges in connection with the shipping of returned goods, including insurance. Custom items are not returnable under any circumstances.

ORDER CANCELLATION

Merchandise is manufactured upon the receipt of the order and deposit. Cancellations will not be accepted after 2 working days from the order issue date. A 50% restocking fee will be applied to any cancellations received after the order issue date.

CONTRACT OR HOSPITALITY ORDER

MAPSWONDERS has the ability to customize existing products or new products to meet contract specifications. These orders will necessitate special pricing based on quantity and features. Please contact MAPSWONDERS for contract quotes.

REMEDIES UPON DEFAULT

Manufacturer requires payment for any shipment hereunder in advance. If Buyer fails to make payment in accordance with the terms of this agreement or otherwise fails to comply with any provision hereof, Manufacturer may, at its option, cancel any unshipped portion of this order, retain the goods and declare a forfeiture of the deposit as liquidated damages. In the alternative, Manufacturer shall (in addition to other remedies available under any applicable Uniform Commercial Code or otherwise by law) have the right to appropriate and apply the goods to payment due hereunder. Any proceeds of the goods may be applied by Manufacturer to the payment of expenses and costs to exercise Manufacturer's rights hereunder, and any balance of such proceeds shall be applied against Buyer's account in such order as Manufacturer shall determine in its sole discretion. Buyer will remain liable for the balance of all unpaid accounts.

TERMS ARE SUBJECT TO CHANGE AT ANY TIME WITHOUT PRIOR NOTICE



FABRIC TECHNICAL INFORMATION



PRAIA BF213-7



PRAIA BF213-6



PRAIA BF213-3



PRAIA BF213-4

COMPOSITION . 95,7% Polyester 4,3% Linen
WIDTH . 145 cm
SUITABILITY . Upholstery
WASHING . Dry clean only



MURSI BF233-06

COMPOSITION . 52% Viscose 19% Polyester 16% Cotton 13% Linen
WIDTH . 140 cm
SUITABILITY . Upholstery
WASHING . Dry clean only



FREDOOM BF232-3

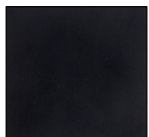


FREDOOM BF232-2

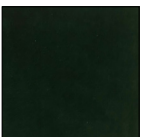


FREDOOM BF232-1

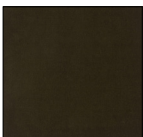
COMPOSITION . 51% Viscose 33% Cotton 7% Polyester 8% Linen 1% Silk
WIDTH . 140 cm
SUITABILITY . Upholstery Curtains
WASHING . Dry clean only



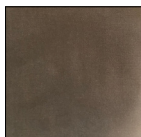
EDEN BF230-8



EDEN BF230-6



EDEN BF230-5



EDEN BF230-2

COMPOSITION . 100% Cotton
WIDTH . 140 cm
SUITABILITY . Upholstery Curtains
WASHING . Dry clean only



MALLORCA BF221-5

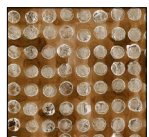


MALLORCA BF221-4



MALLORCA BF221-3

COMPOSITION . 67% Viscose 15% Cotton 10% Polyester 7% Linen 1% Silk
WIDTH . 140 cm
SUITABILITY . Upholstery Curtains
WASHING . Dry clean only



BOMBOM AMARELO

COMPOSITION . 88% Cotton 12% Polyester
WIDTH . 150 cm
REPEAT . V 35cm H 34,5 cm
SUITABILITY . Upholstery Curtains
WASHING . Dry clean only



CLIENT SERVICES

CATALOGUE REQUEST

Email . info@mapswonders.com

Phone . 00351 913 220 275

IMAGES HR

Email . vascopintado@mapswonders.com

Phone . 00351 913 220 275

SAMPLES REQUEST

Email . vascopintado@mapswonders.com

Phone . 00351 913 220 275

CONTRACT OR HOSPITALITY ORDERS

Email . vascopintado@mapswonders.com

Phone . 00351 913 220 275

CLIENT ACCOUNTS

Email . vascopintado@mapswonders.com

Phone . 00351 913 220 275

COMMUNICATION & PRESS

Email . vascopintado@mapswonders.com

Phone . 00351 913 220 275

FINANCIAL SERVICES

Email . mariapintado@mapswonders.com

Phone . 00351 913 220 275

www.mapswonders.com

00351 913 220 275

info@mapswonders.com





HANDCRAFTED DESIGN WITH
MODERN SENSIBILITY

CRAFTED BY HAND AND METICULOUSLY
FINISHED TO ENSURE THE BEST
QUALITY STANDARDS

